



HAYWARD®

VS Omni

Pool Automation Control

Operation Manual

Contents

- Introduction.....2
- Favorites.....17
- Themes.....22
- Config.....24
- Upgrade.....27
- Simple Mode.....30
- Web Enabled Control.....33
- Warranty.....34

HL32950VSP HL32900VSP
HL2350020VSP HL2670020VSP

Hayward Pool Products
620 Division Street, Elizabeth NJ 07207
Phone (908)-355-7995
www.hayward.com



HAYWARD®

IMPORTANT SAFETY INSTRUCTIONS

When using this electrical equipment, basic safety precautions should always be followed, including the following:

- READ AND FOLLOW ALL INSTRUCTIONS
- **WARNING:** Disconnect all AC power during installation.
- **WARNING:** Water in excess of 100 degrees Fahrenheit may be hazardous to your health.
- **WARNING:** To reduce the risk of injury, do not permit children to use this product unless they are closely supervised at all times.
- **WARNING:** Do not use the VS Omni to control fire pits or related equipment.
- A green colored terminal marked "Grounding" is located inside the wiring compartment. To reduce the risk of electric shock, this terminal must be connected to the grounding means provided in the electric supply service panel with a continuous copper wire equivalent in size to the circuit conductors supplying the equipment.
- One bonding lug for US models (two for Canadian models) is provided on the external surface. To reduce the risk of electric shock, connect the local common bonding grid in the area of the swimming pool, spa, or hot tub to these terminals with an insulated or bare copper conductor not smaller than 8 AWG US / 6 AWG Canada.
- All field installed metal components such as rails, ladders, drains, or other similar hardware within 3 meters of the pool, spa or hot tub shall be bonded to the equipment grounding bus with copper conductors not smaller than 8 AWG US / 6 AWG Canada.

SAVE THESE INSTRUCTIONS



HAYWARD®

Introduction

This manual assumes that the VS Omni has been installed and configured according to the Installation Manual. The VS Omni can now be programmed with user desired settings such as schedules, themes, and favorites. This manual will also explain how to manually turn pool equipment on/off, program settings for specific equipment, view pool equipment status and conditions, and more.

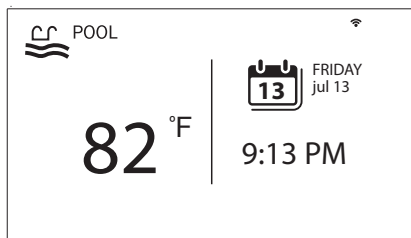
Now that the initial configuration has been completed, the VS Omni will automatically go to the Home Screen or Idle Screen. All settings and operation functions can be accessed from the Home Screen. Note that if the VS Omni Control Pad is not touched for more than two minutes, the Idle Screen will be displayed.

Using the Control Pad

The VS Omni uses the Control Pad touchscreen as the main interface with the device. Once configured, the VS Omni can be controlled remotely by internet enabled devices such as computers, tablets, and phones. The Control Pad must be used to access the Configuration Wizard. The Configuration Wizard is used for initial configuration (completed during the installation process) and for any changes to existing configuration.

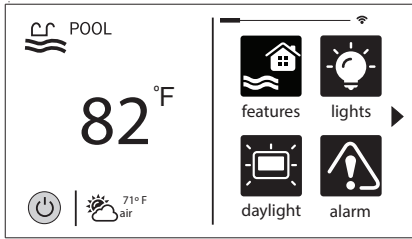
Idle Screen

The Control Pad will display the idle screen after two minutes of user inactivity. When the filter pump is on, the Idle Screen will display the current temperature of the pool on the left side of the screen. On the right side of the screen, the time will be displayed and the air temperature will toggle with the date as well as other information.



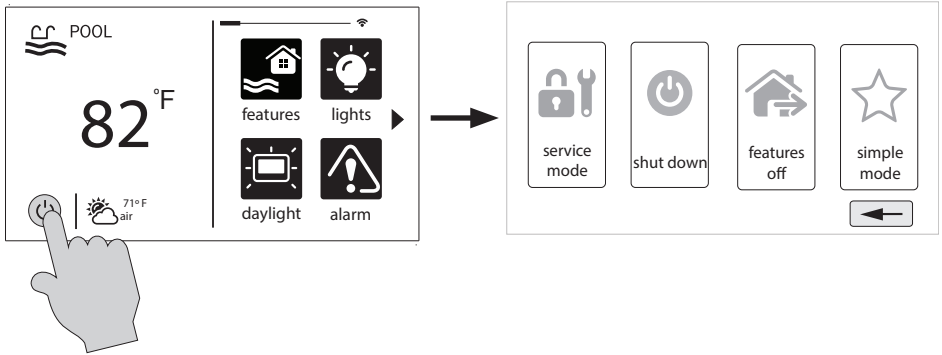
Home Screen

When the Idle Screen is touched, the VS Omni will display the Home Screen. This screen will give the user access to all functions, settings, and configuration options.



Power Button

The power button is displayed at all times when the VS Omni is not idle. When touched, it offers the following 4 functions:



Shut Down - When Shut Down is selected, the VS Omni will turn off all pool equipment and report when it is safe to remove power. When this message is displayed, you can either power off the unit or restart the VS Omni by touching the large power button displayed on the left side of the screen.

Service Mode - Service Mode will turn off all pool equipment and disable all networked devices. Service Mode is useful to prevent scheduled operation and disable remote operation while servicing the pool. After selecting Service Mode, there are two options:

Service Mode (Standard): The VS Omni will remain in Service Mode until you manually exit. To exit Service Mode, touch the power button and select the Service Mode button again.

Service Mode Timed: Before entering Service Mode, you will select a Service Mode timeout. This is the amount of time that the VS Omni will stay in Service Mode before automatically exiting. The timeout can be set between 1-96 hours. There is no need to exit Service Mode manually.

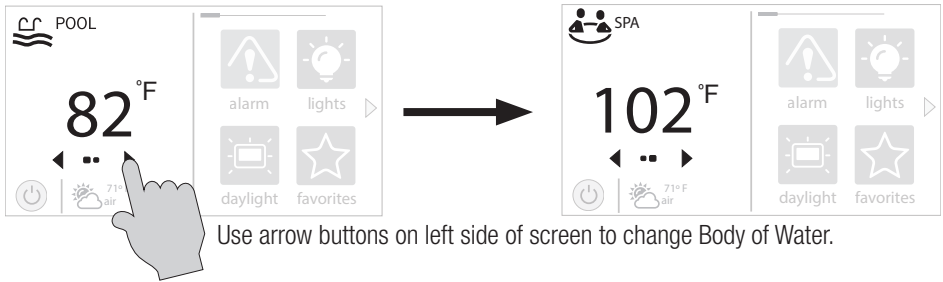


Features Off - Features Off offers a quick way to turn off all equipment (except the filter pump and ColorLogic lights if running because of a schedule) with a single touch of a button.

Simple Mode - Simple Mode is a customizable screen that can be set up for quick access to your Favorites (page 17). You can set up only the Favorites that you want shown while in Simple Mode. Because it's customizable, Simple Mode can provide a convenient way to access the most common functions for owners as well as a handy solution to limit access to other users. For information on how to create and delete Simple Mode functions, refer to the "Favorites" section in this manual. The MSP ID number (page 27) is needed when entering and exiting Simple Mode.

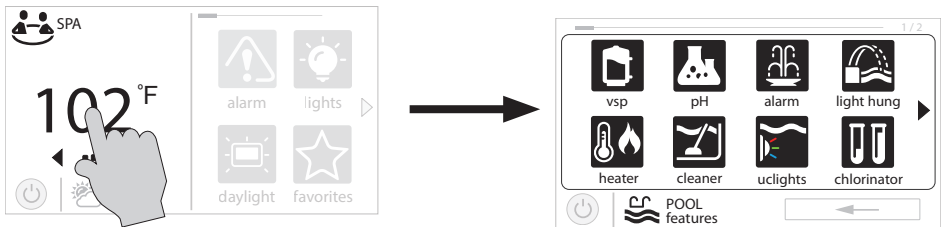
Selecting a Body of Water - Left Side of Home Screen

The left side of the Home Screen allows you to select and control a Body of Water. If more than one Body of Water is used (typically a pool and a spa), pressing the left and right arrows shown below toggle between the Bodies of Water. If just a pool is configured, there will be no arrows shown.



Controlling a Body of Water

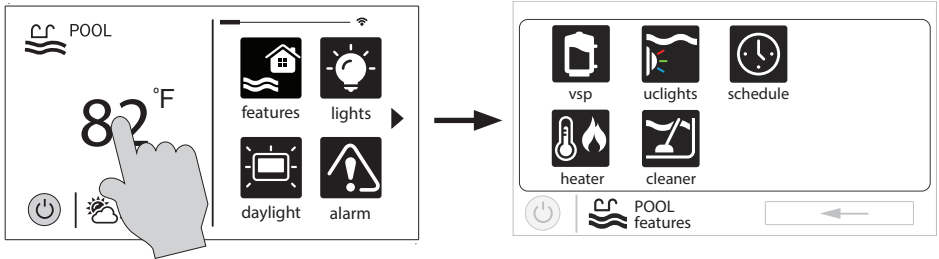
When the desired Body of Water is displayed, touch the left side of the screen to advance to the Body of Water Features Screens. The items shown on the Features Screen relate to that Body of Water ONLY. To control a different Body of Water, select the desired Body of Water at the Home Screen first, then go to the Features Screens.



When the desired Body of Water is displayed, touch left side of screen to enter Control Screens.

Features (left side of the Home Screen)

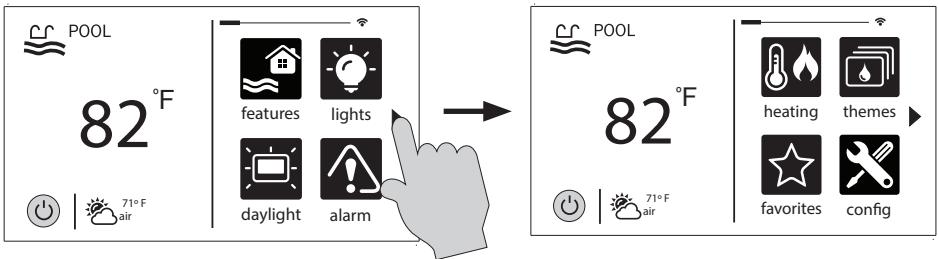
After selecting the desired Body of Water (if applicable), touch the left side of the screen to advance to the Features Screen. The various buttons shown in the Features Screen are related to initial configuration. For example, if you configured a heat pump to heat the pool, then the heater settings for the heat pump will be displayed.



Favorites - Right Side of Home Screen

The right side of the Home Screen is Favorites. These buttons offer universal control for all Bodies of Water and Backyard equipment. Up to four Favorite buttons will be shown on the Home screen. To access more Favorites, touch the arrows on the left or right of the Favorite buttons.

Note that some default buttons will appear on the Favorites Screen. These buttons are related to your initial configuration settings and are automatically created. In addition, custom "Favorite" buttons can also be added. The VS Omni supports up to 50 Favorites for quick, easy access to commonly used functions.



Navigation

The VS Omni has been designed to be intuitive, allowing most users the ability to navigate with little instruction. Following is a list of commonly used buttons. As you navigate through the various screens, these buttons will likely be displayed. Some sections of this manual may refer to buttons that are specific to certain types of pool equipment. You'll find more information about those buttons under their corresponding section. If your installation does not include that particular equipment, those sections can be skipped.



HAYWARD®



Save - Touch this button to save your selection.



Cancel - Touch this button to cancel your selection.



Advance - Touch this button to advance to the next screen.



Back - Touch this button to return to the previous screen.



Add - Touch this button to add an item.



Delete - Touch this button to delete a highlighted item.



Turn On or Enable - This button will either manually turn on pool equipment or enable a function.



Turn Off or Disable - This button will either manually turn off pool equipment or disable a function.



Schedule - Touch this button to schedule a function.



Countdown Timer - Touch this button to set a countdown timer.

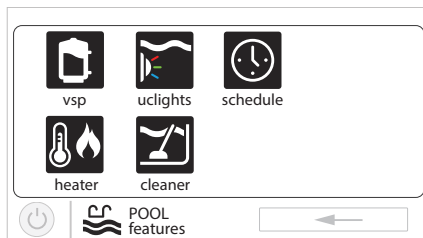


Back - Touch this button to return to a previous screen.

Features and Control Screens

As previously stated, the Features Screen allows you to control functions and equipment. The contents of the Features Screen is a result of how the VS Omni was configured using the Configuration Wizard. If equipment is missing or does not belong in the Features Screen, you may have to go back to the Configuration Wizard and correct the configuration of that equipment.

An example of a Features Screen is shown below. In this example, we are looking at the Pool (shown in the lower left of the screen) configured with a pump, a heater, a cleaner, and UCL lights.



Depending on the equipment in your system, your screens will likely be different. The purpose of this section is to explain how Features and Control Screens work as well as show some common equipment examples which will help familiarize you with the interface. Even though some of your equipment may be different, you should see similarities in the following examples that will help you create and change settings for all the equipment in your Features Screens.

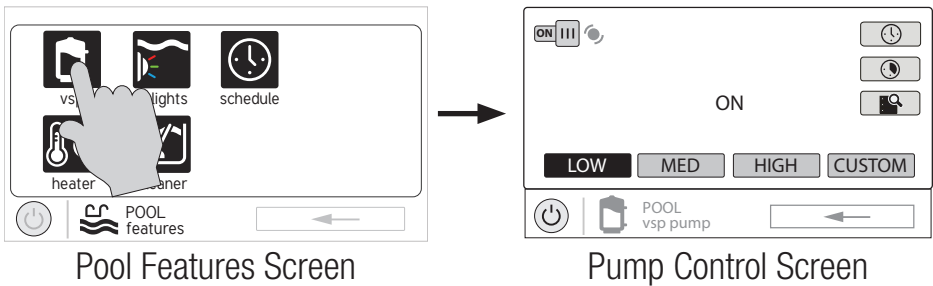
Note that the following examples will be shown for the Pool only. All of the equipment shown in the Features Screens will have been initially configured in the Configuration Wizard to operate with a Pool body of water. You may have configured the VS Omni to share equipment with the Spa in which case the equipment will be shown in the Features Screen for both the Pool and Spa.

Control Screens

After an item has been selected in the Features Screen, you'll be brought to a control screen. Control Screens are used to make changes to the pool's equipment settings. To change a setting, you'll first touch the left side of the Home Screen to enter the Features Screen, then select the equipment you'd like to set.

Filter Pump

In the example below, a variable speed pump which was named "vsp" has been configured to be used with the Pool in the Configuration Wizard. Touching the "vsp" button in the Features Screen will bring you to a pump Control Screen which will let you manually turn on/off the pump, view the status, set a schedule, set a speed, start a countdown timer, or view the pump's diagnostics. Single speed and two speed pumps will have a similar Control Screen.



Turn On / Turn Off - Slide this switch manually to turn on/off the pump. This will override any schedules or timer settings.

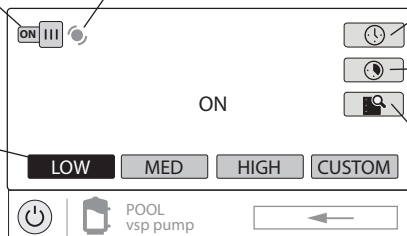
Change Speed - Manually select the desired speed. This will not be shown for single speed pumps. Low, Med, and High are fixed speeds. The Custom button will bring you to a screen that allows you to select a speed based on percentage or RPM (determined during configuration).

Status of Equipment - This is an indicator only. When lit up and in motion (shown below), the equipment is active. When grayed out and stationary, the equipment is off.

Set Schedule - Touch this button to add/delete a schedule for the filter pump or to enable/disable an existing schedule.

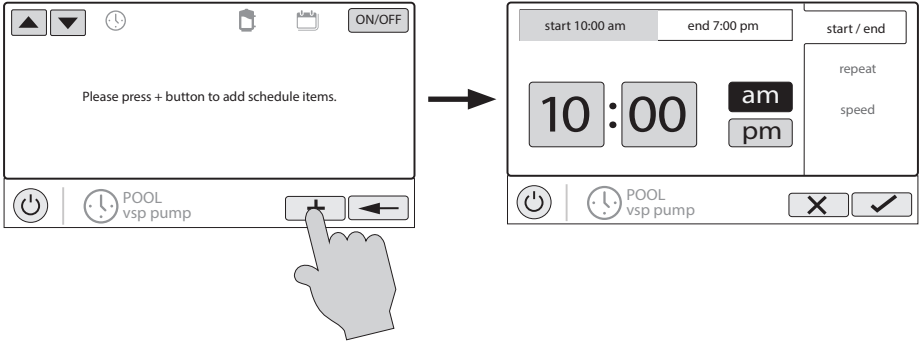
Countdown Timer - Touch this button to set a countdown timer for the filter pump.

Diagnostics - Touch this button to view the filter pump's diagnostics. This option only appears for variable speed pumps.



Add a Schedule

If the “Set Schedule” button is touched, you’ll be brought to the pump schedule screen below. Here you can add, delete, edit, enable, and disable schedules. Because there have been no schedules set up, the screen is blank. Touch the Add button (+) to add a schedule for the pool pump.



Set Schedule Time

Refer to the screen below to set the start and end times. When finished, touch “repeat”.

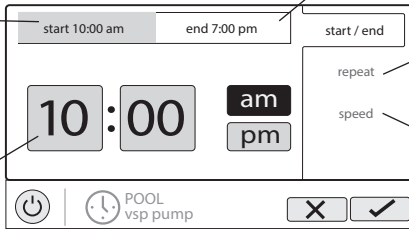
Set Start Time - Select this button to edit the start time. The pump will start at the time shown.

Edit Time - Select the Hours, Minutes, or AM/PM fields to change the desired time.

Set End Time - Select this button to edit the end time. The pump cycle will end at the time shown.

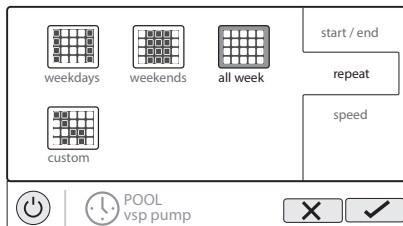
Set Schedule Frequency - Select how often you’d like the schedule to run (weekdays, weekends, all week, custom).

Set Pump Speed - Select this button to change the pump speed for the schedule. This option only appears for variable speed and two speed pumps.



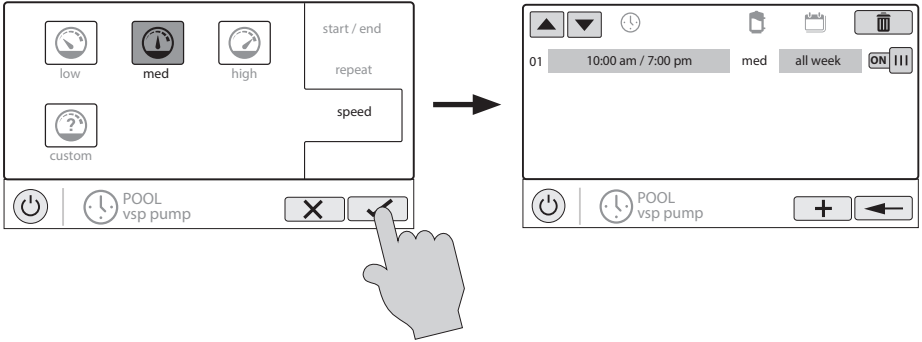
Set Schedule Frequency

Refer to the screen below to select how often you’d like the schedule to run. If “custom” is selected, you’ll be asked which day(s) of the week you would like the pump to run. Touch “speed” when finished.



Set Pump Speed

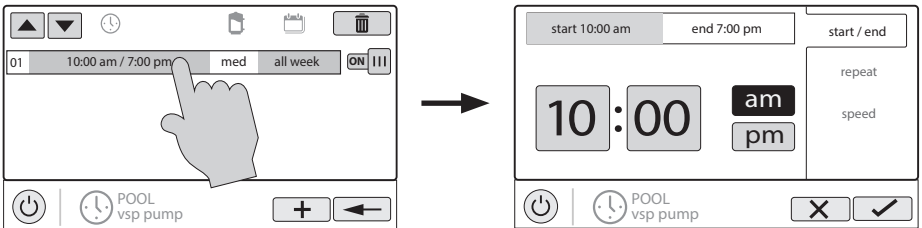
Refer to the screen below to select the pump speed during the schedule. If custom is selected, you'll be asked to set the % pump speed or RPM depending on the setting. When finished, touch the Save button to save the schedule. NOTE: the speed setting only appears if the pump is a variable speed or a two speed pump.



NOTE: if you intend to run the pump at different speeds throughout the day, create additional schedules. You can start a new schedule on the same minute that the previous one ends. If schedules overlap, the newest schedule's start time will take priority by ending the previous schedule early. You can create up to 100 total schedules on the system.

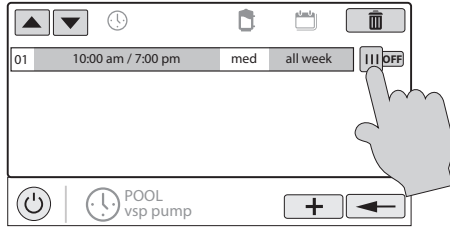
Edit a Schedule

To edit a schedule, touch the schedule as shown below. You'll be brought back to the screen which will allow you to set times, speed and frequency.



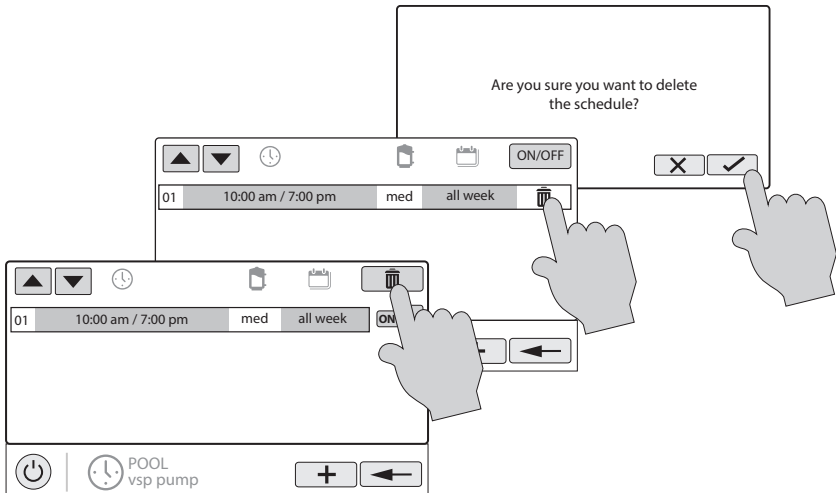
Turning a Schedule Off

There may be circumstances when you will want to turn off a schedule temporarily. To do this, slide the On/Off button to "Off". The schedule will remain off until you go back to this screen and turn it off.



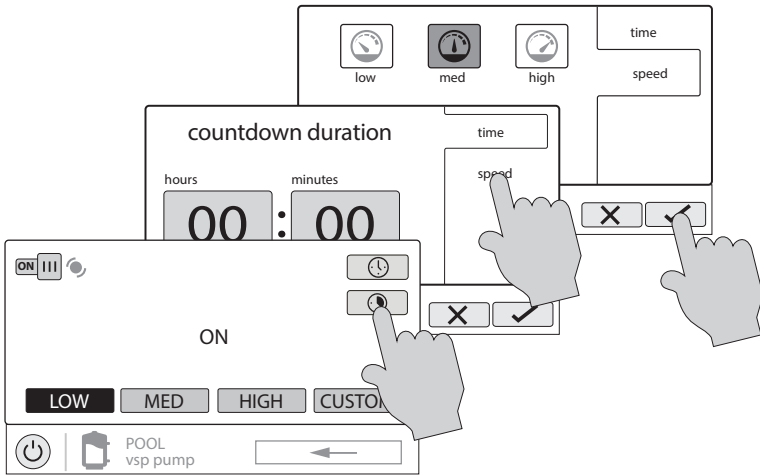
Deleting a Schedule

Schedules can be deleted when they are no longer necessary. To delete a schedule, select the schedule and touch Delete as shown below. A Delete button should appear on the side of the schedule. Touch this Delete button to remove the schedule.



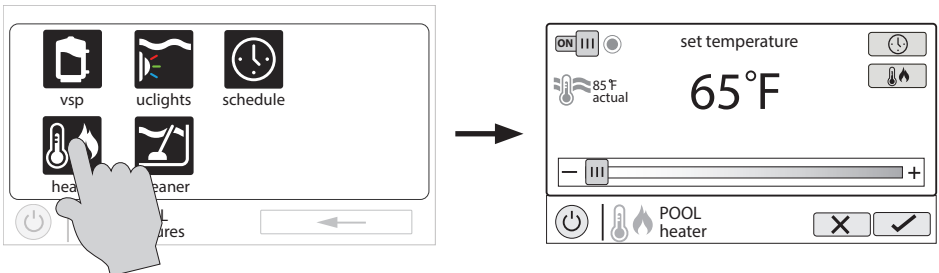
Countdown Timer

A countdown timer runs or enables equipment for the amount of time specified. You can initiate the countdown timer at the equipment's control screen. At the countdown screen, set the desired countdown time. In this case, the timer will run the pump for the specified countdown time. If the equipment is already running due to a schedule, the countdown timer setting will override the schedule and turn off at the end of the countdown interval. If the equipment is off, the countdown timer will turn it on for the duration/speed that has been set.



Heater

The VS Omni has one output for a gas heater or heat pump. It can also provide solar heating using the actuator output to divert water through installed solar equipment. Touching the Heater button in the Features Screen will let you enable or disable the heater, set priority, set temperature, set a schedule and view the status of the heater. An example of the heater Control Screen is shown below:



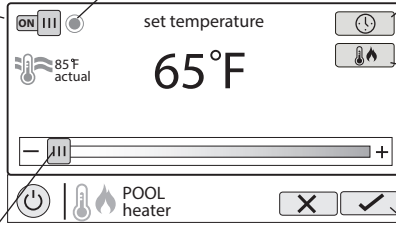


HAYWARD®

Enable / Disable - Slide this switch to enable and disable the heater. The setting will not take effect until the Save button is touched. To turn on the heater, adjust the setpoint higher than the actual water temperature and then save.

Status of Equipment - When grayed out and stationary, equipment is currently idle. When in motion, the heater is actively heating.

Set Schedule - Touch this button to set a schedule for the heater.



Set Priority - If Solar heating is used in addition to a conventional heater, use this button to set priority and enable/disable heaters.

Change Setting - This slider will raise and lower the heater setpoint setting.

Save Setting - the settings is not saved until this button is pushed.

Setting and Changing Priority if using Solar Heating

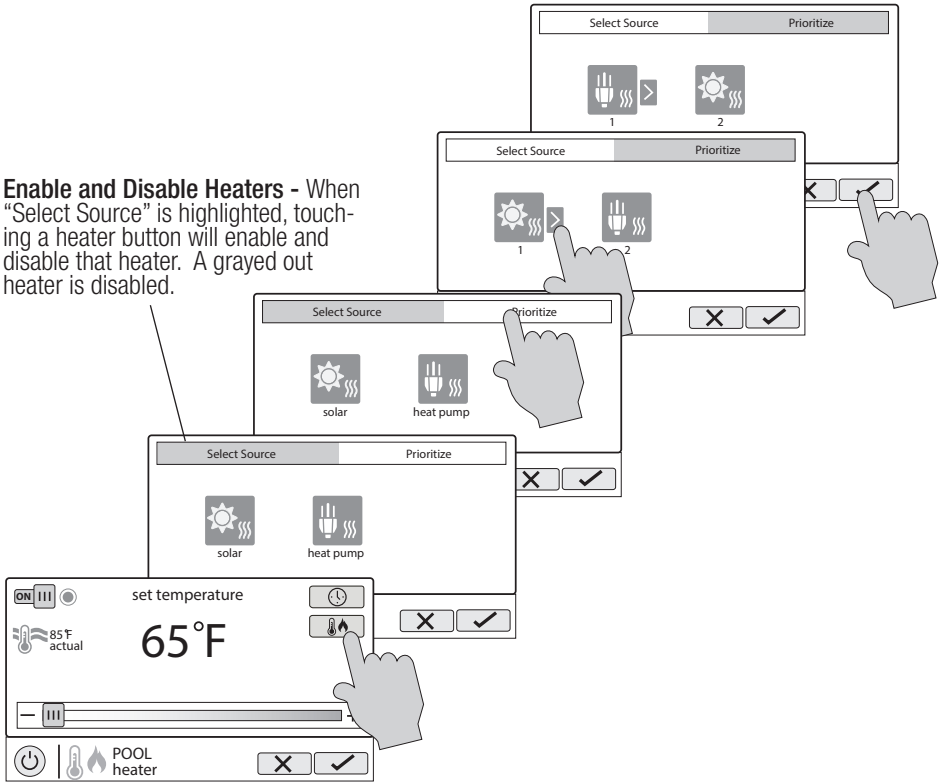
If a solar heater is added, the Set Priority button will appear in the Heater Control Screen. If the priority heater cannot meet the demand for heat, the next heater will be allowed to operate. Use priorities to maximize efficiency by allowing the most cost effective heater to run first.

The example on the following page shows how to change priority to run the solar heater first, then, if it can't meet the demand for heat, the heat pump will be allowed to operate. Note that the time interval used for heater priority can only be changed in the Configuration Wizard. A time interval setting of "0" will eliminate priority and always run both heaters at the same time.

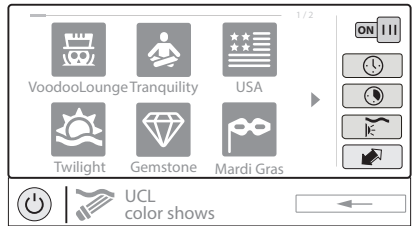
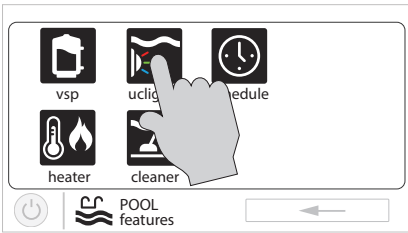


HAYWARD®

Enable and Disable Heaters - When "Select Source" is highlighted, touching a heater button will enable and disable that heater. A grayed out heater is disabled.



ColorLogic Lights



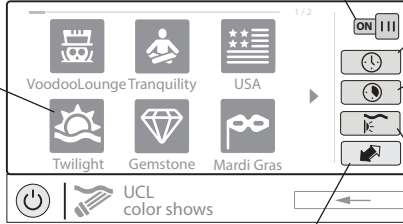


HAYWARD®

Turn on / Turn off - Slide this switch to manually turn on/off the ColorLogic lights. This will override schedules or timer settings.

Set Schedule - Touch this button to set a schedule for the ColorLogic Lights.

Selections - Select the desired light show or solid color.



Countdown Timer - Touch this button to set a countdown timer for the lights.

Synchronize - Touch this button to synchronize the ColorLogic lights. The lights will then default to Voodoo Lounge.

Light Show/Color - This button will change the selection between light shows and solid colors.

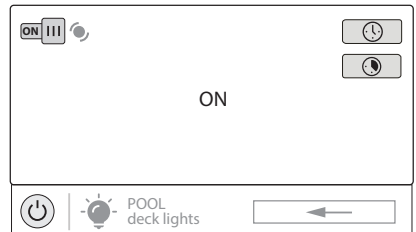
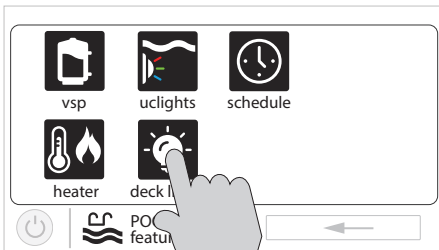
You can set schedules for the ColorLogic lights as well as countdown timers. This procedure has been previously shown. Note that after the countdown interval, the lights will go off regardless of their previous state.

Light Show/Color - From the ColorLogic Control Screen, select the desired show or color. Use the Advance button to show all of the available selections. Use the Light Show/Color button to switch between all light shows and all solid colors.

Synchronize - Because changing colors and shows requires interrupting power to the ColorLogic lights, there is a chance that the lights could lose synchronization due to timing issues. If you find that the color or show does not correspond with the selection that you've made, the lights may be out of sync. Touch the Synchronize button to re-sync the ColorLogic lights.

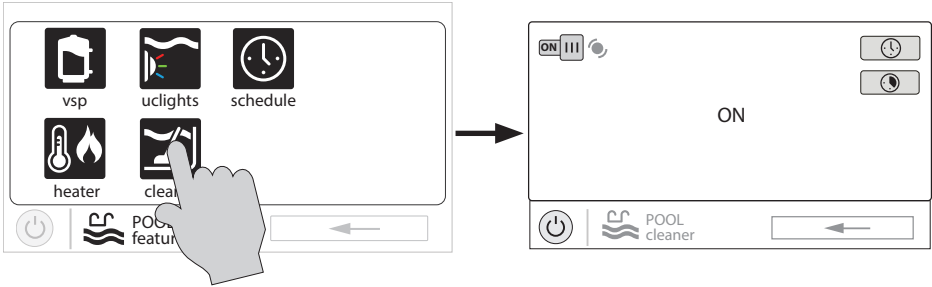
Other Lights

You can turn other lights on/off, set schedules, and set a countdown timer at the Other Lights Control Screen shown below. These functions have been illustrated previously in this manual.



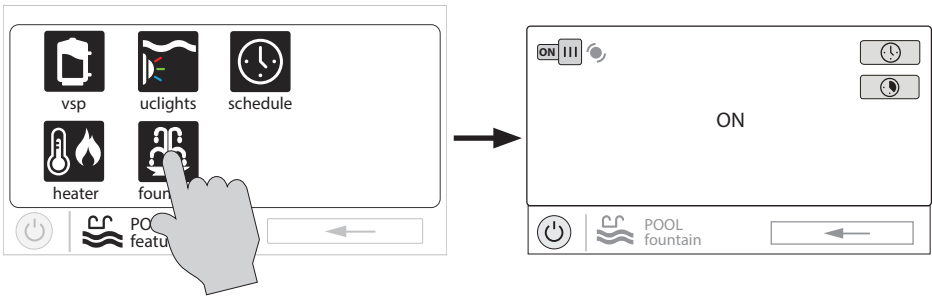
Cleaners

You can turn the cleaner on/off, set schedules, and set countdown timers at the Cleaner Control Screen shown below. You can also set pump speed if a two speed or variable speed pump has been configured to be used with the cleaner.



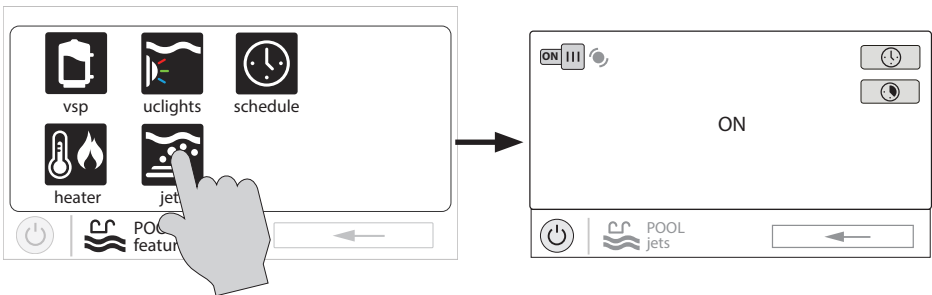
Water Features

You can turn the water feature on/off, set schedules, and set countdown timers at the Water Features Control Screen shown below. You can also set pump speed if a two speed or variable speed pump has been configured to be used with the water feature.



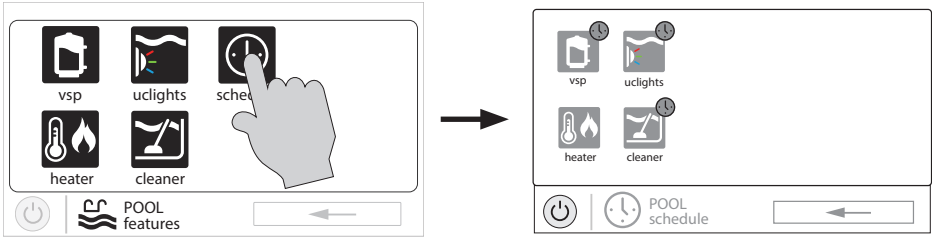
Accessories

You can turn the accessories on/off, set schedules, and set countdown timers at the Accessories Control Screen shown below. You can also set pump speed if a two speed or variable speed pump has been configured to be used with the accessory.



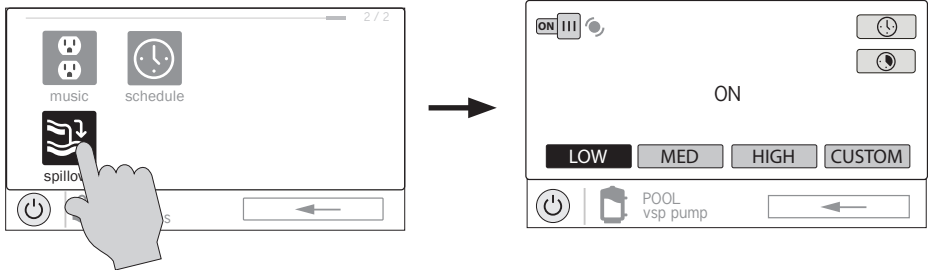
Schedule

The Schedule button appears on the Features Screen regardless of what equipment has been configured in the Configuration Wizard. It offers a convenient way to create and edit schedules. Any equipment that has been configured and has an option for schedules, will be shown in the Schedule Control Screen. Equipment that has been assigned a schedule will show a clock symbol in the upper right side of the button. Touching any of these buttons will bring you to the schedule screen for that equipment. Create and edit schedules as shown on page 8.



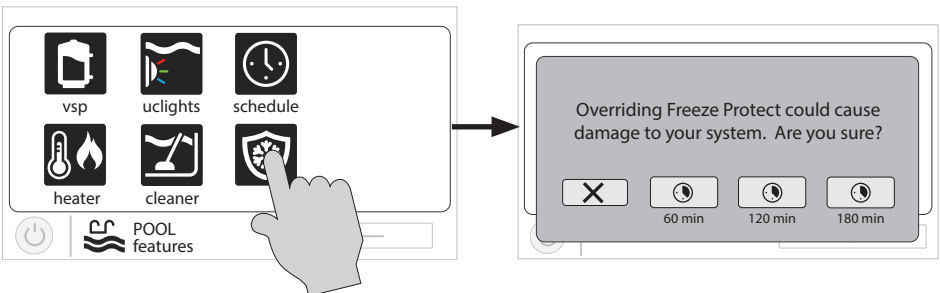
Spillover

If spillover is configured, you can turn spillover on/off, set schedules, and set a countdown timer at the Spillover Control Screen. These functions have been illustrated previously in this manual.



Freeze Protect Override

If freeze protect is enabled AND the air temperature falls below the freeze threshold, the VS Omni will turn on the filter pump to circulate the water. Freeze protection can be overridden for 60 minutes by touching the Freeze Prot. button found on the Features Screen. **IMPORTANT:** Ensure that equipment is protected from a freeze condition before overriding this feature. To resume normal freeze protection, simply touch the Freeze Prot. button again.





Favorites

Favorites can be found on the right side of the Home Screen and offer control for equipment. Favorites are also used to control equipment that has been configured for the “Backyard”. Favorites offer quick easy access to frequently used functions and most Favorites can be added to Simple Mode (page 30).

The VS Omni will automatically create some Favorites based on your system’s configuration. You can also create your own Favorites. Once Favorites have been created, you can change the location in which they appear on the Home Screen. In addition, if you no longer require a Favorite, it can be deleted. The VS Omni supports up to a total of 50 Favorites.

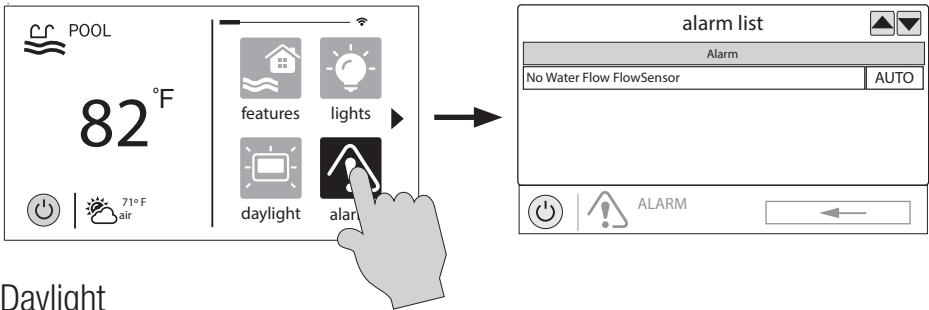
In most cases, touching a Favorite button on the Home Screen will bring you to the same screens that have been covered in the Control Screens section of this manual. Refer to these screens if necessary.

Alarms



An alarm condition will change the mood color of the entire touchscreen (if enabled) and display an “!” symbol in the upper right side of the associated button as shown below.

For more detail, use the Alarm button found in Favorites. Alarms are automatically generated when the VS Omni detects a condition outside of the normal operating parameters. The Alarm button found in Favorites will bring you to a screen that displays any active alarms (shown below). Some alarms can be manually deleted; others will remain until the alarm condition is corrected.



Daylight

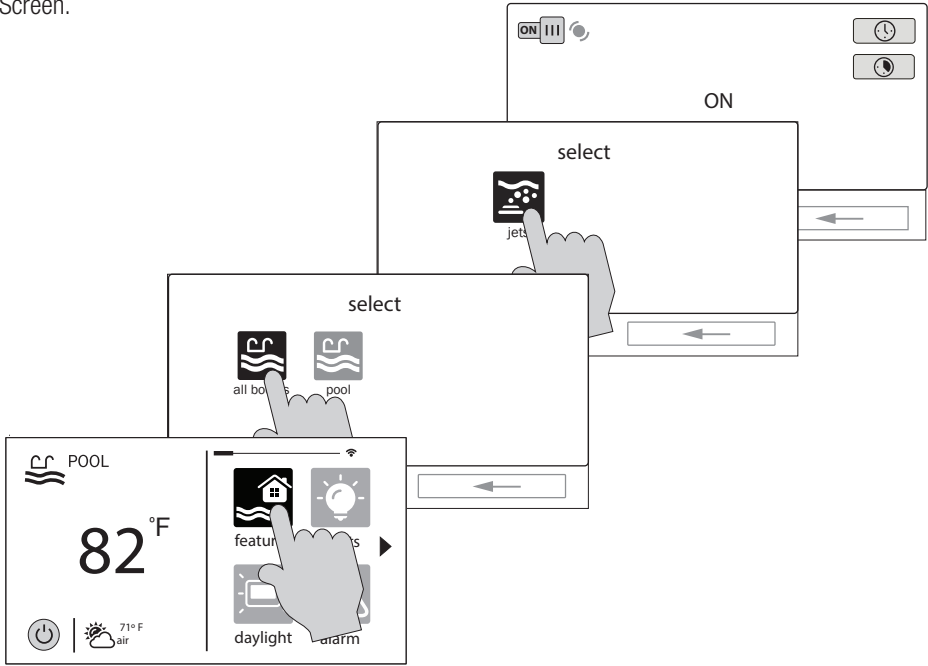
Daylight is another button that will appear in Favorites by default. This button is used to change the screen contrast for better viewing in bright sunshine. Touching this button will toggle Daylight viewing on and off.

Features/Lights/Heaters/Backyard

These four buttons function similarly. If any water feature, light, heater, or backyard accessory has been configured in the Configuration Wizard, a Features, Lights, Heaters, and/or Backyard button will appear in Favorites. These buttons give you quick access to the control screens for all related pool equipment. These are the same control screens that you’ve used in the Pool Features and Control Screens section of this manual.

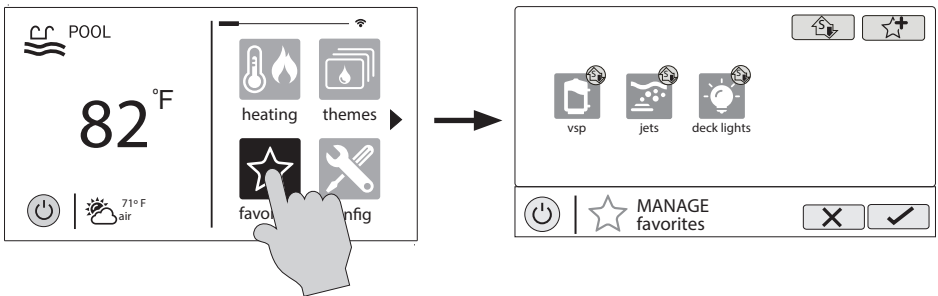
Edit Features/Lights/Heaters

When a feature, light, or backyard accessory is selected, you'll advance to the related Control Screen.



Favorites Screen

All of the buttons on the right side of the Home Screen are referred to as "Favorites" but there is also a Favorites button. Using this button, you can create and manage all of your favorites.





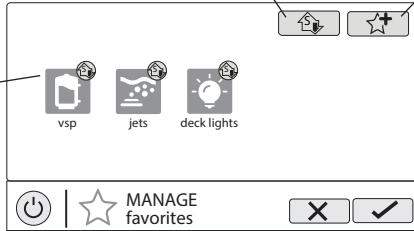
HAYWARD®

Add to Simple Mode - Touch this button to add a favorite to Simple Mode.

Add Favorite - Touch this button to add a favorite.

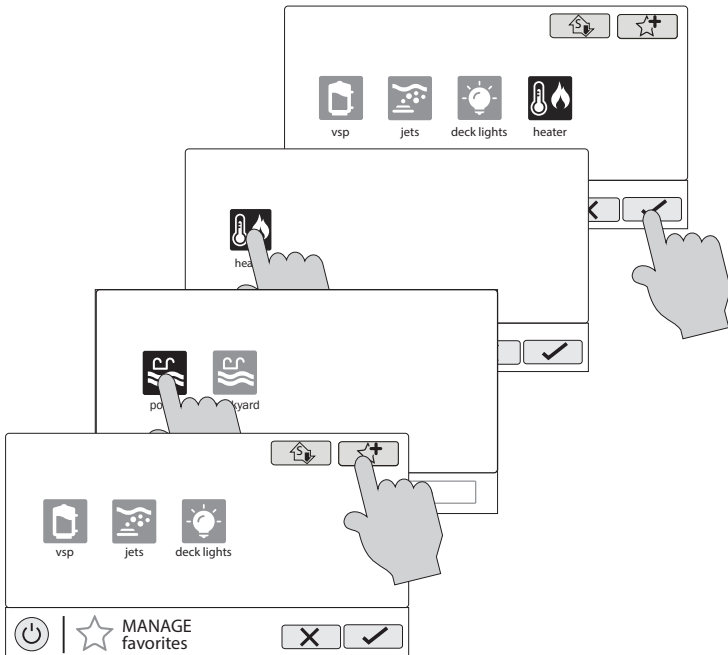
Current Favorites -

These are favorites that have already been added. You can change the location of where they appear on the Home Screen.



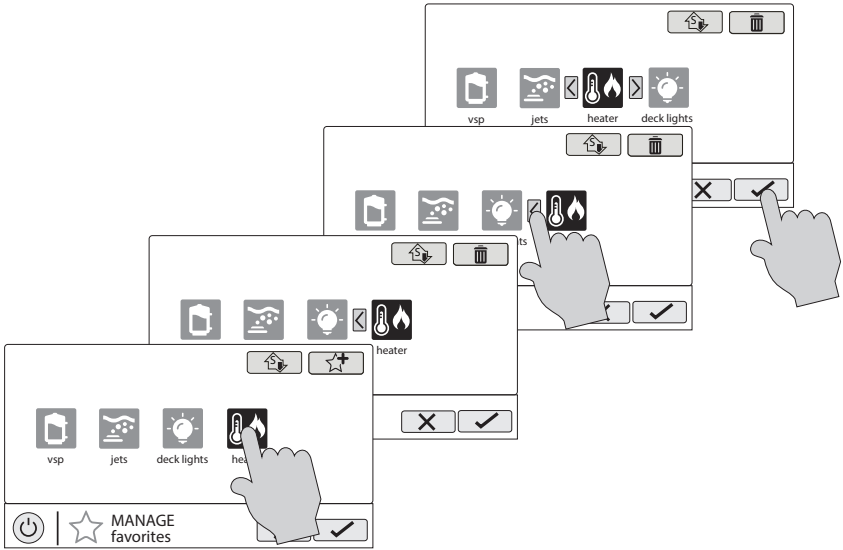
Creating Favorites

Follow the procedure below for adding Favorites. This example shows how to create a Favorite for a heater. To find "heater" in our Add Favorites screen, we have to select "Pool" when prompted. The next screen will show all equipment configured for the Pool; in this case, just heater. Selecting heater and saving will add the heater to the Favorites screen. We can now move the heater button if desired.



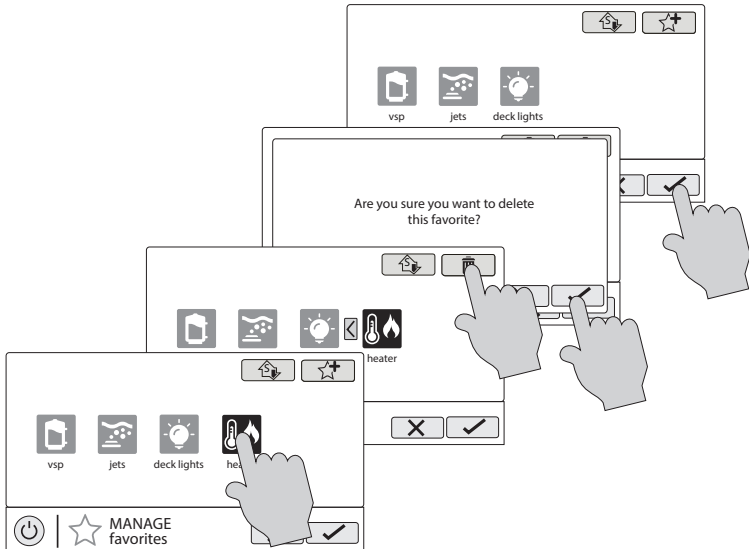
Moving Favorites

Favorites will be displayed on the Home Screen in the order that they are shown on the Favorites Screen, from left to right. The default Favorites cannot be moved. To move Favorites, follow the procedure below.



Deleting Favorites

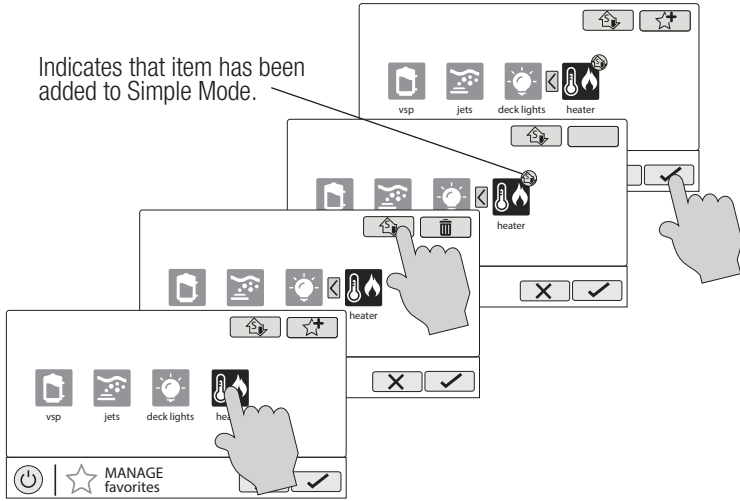
To delete Favorites, follow the procedure below. Default Favorites cannot be deleted.





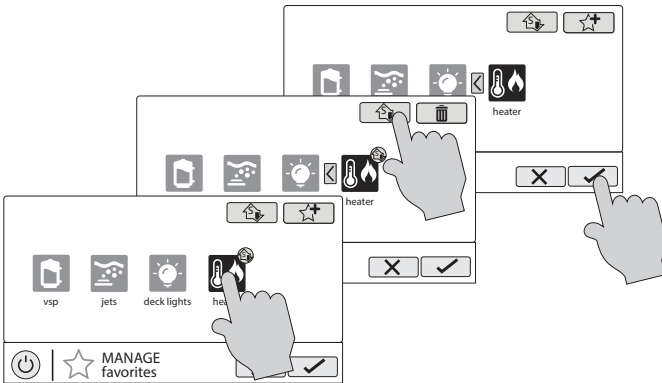
Adding Favorites to Simple Mode

For more information on Simple Mode, refer to page 30. Note that most Favorites can be added to Simple Mode but not all. Follow the procedure below. Note: If the Favorite has been added to Simple Mode, moving the button location on the Favorites screen will affect its position on the Simple Mode screen.



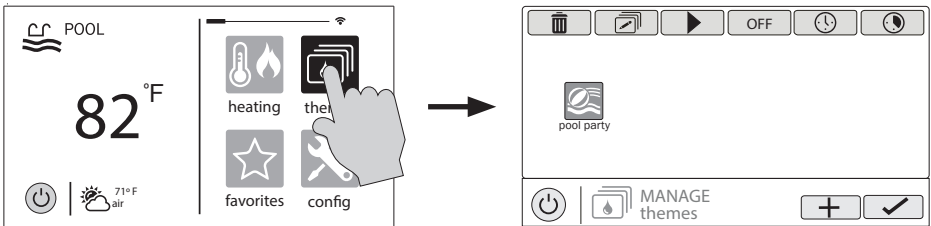
Deleting Favorites from Simple Mode

Deleting Favorites from Simple Mode is similar to adding Favorites to Simple Mode.



Themes

Themes allow you to execute many pool functions with just one button. This can be handy for functions that require interaction with various pool equipment. For example, spending an evening in the spa might require you to turn on the spa jets, set the heater to 104°F, and turn on the spa lighting. Rather than manually performing these functions, they can be saved as a Theme and executed with just one button. To create a Theme, put all of the equipment into the desired state. In the example above, you would set all the equipment as described. When creating Themes, the VS Omni takes a “snapshot” of the system state/settings. This snapshot is saved as a Theme. Refer to the following diagrams and information for creating and running Themes.

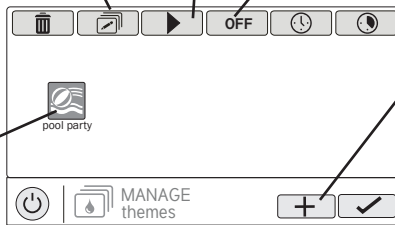


Edit Theme - After selecting a Theme, touch this button to edit the Theme. You can rename, change icon and set as favorite.

Start Theme - After selecting a Theme, touch this button to start the Theme.

End Theme - After selecting a Theme, touch this button to end the Theme.

Select Theme - Touch this button to select the desired Theme. You can now turn it on/off, edit, set a schedule, set a countdown timer, or delete the selection using the buttons above.



Create a Theme - Touch this button to create a Theme. Before creating, make sure all pool/spa/backyard equipment is in the desired state.

Create a Theme

To create a Theme, put all of the equipment into the desired state and refer to the diagram on the top of the next page.

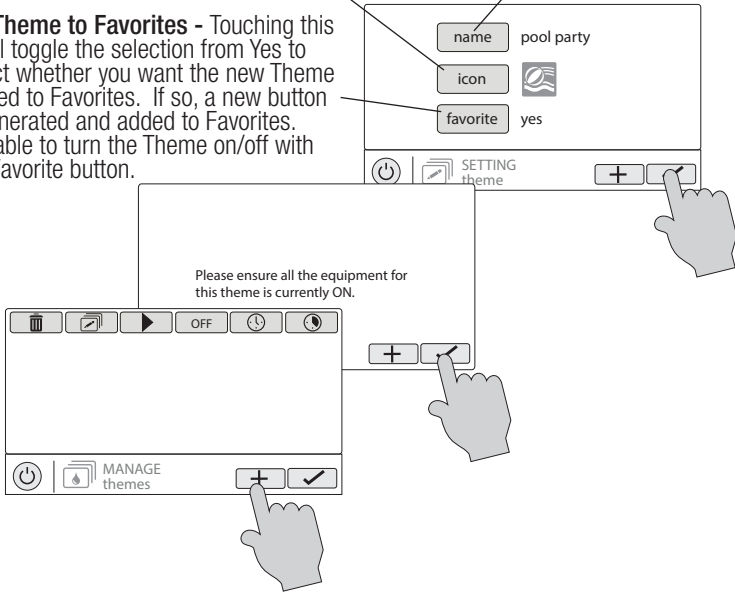


HAYWARD®

Select an Icon - Touching this button will bring you to an icon selection screen. Touch the advance button to access more icons. Selecting and saving the icon will bring you back to this screen.

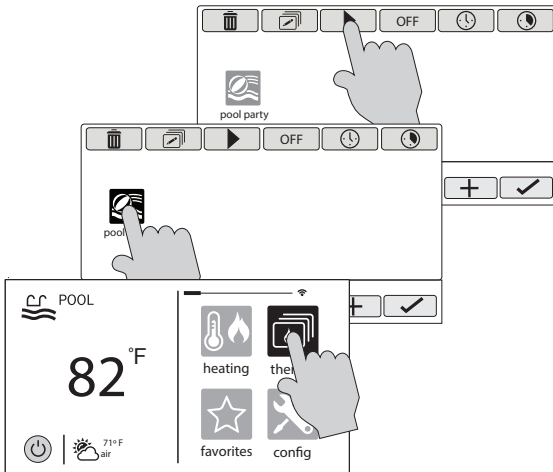
Add the Theme to Favorites - Touching this button will toggle the selection from Yes to No. Select whether you want the new Theme to be added to Favorites. If so, a new button will be generated and added to Favorites. You'll be able to turn the Theme on/off with the new Favorite button.

Name the Theme - Touching this button will bring you to a keyboard where you can enter a name for the theme. Saving the name will bring you back to this screen.



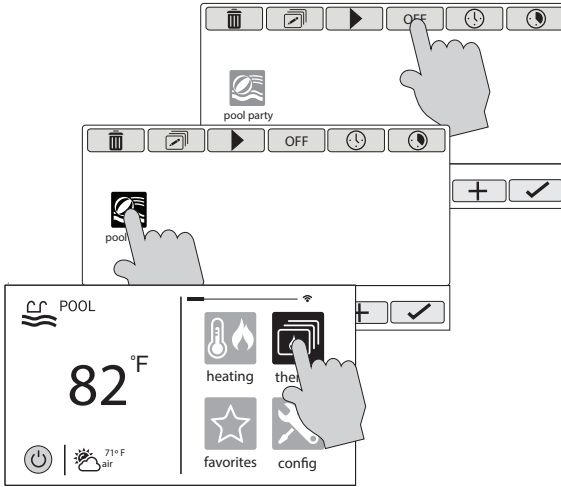
Starting a Theme

If a Favorite was created for the Theme, run the Theme just as you would any other Favorite. To start a Theme within the "Manage Themes" screen, follow the procedure below. Note that only one Theme can run at a time.



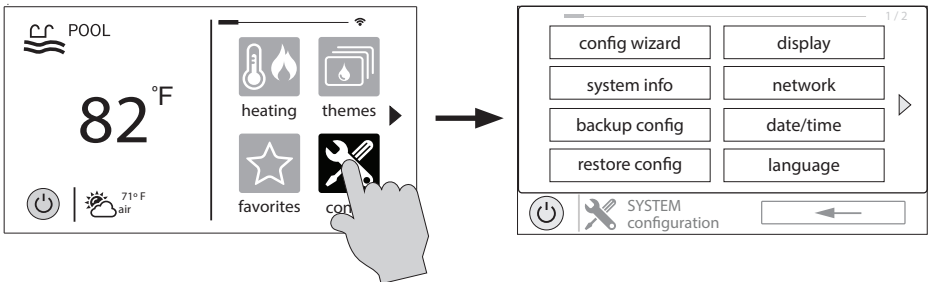
Stopping a Theme

If a Favorite was created for the Theme, stop the Theme just as you would any other Favorite. To stop a Theme within the “Manage Themes” screen, follow the procedure below. Note that when stopping a Theme, all functions will turn off and the filter pump will return to any schedules that have been previously set.



Config

The Config button offers many options related to the configuration and operation of the VS Omni. You can view log files, backup configuration settings, restore configuration settings, modify display settings and more.



Using a USB Thumb Drive

Some options require the use of a USB thumb drive (removable media) that will be inserted in the VS Omni. If logging is desired (page 26), the thumb drive should be left in the VS Omni during normal operation. This connection is not waterproof so care must be taken to protect the Control



HAYWARD®

Pad while logging. The location of the USB port is shown in the Installation Manual.

Config Wizard

The Configuration Wizard is used to add, remove, and configure pool equipment that is controlled by the VS Omni. Configuration should have already been completed at installation and should not be necessary unless a change has been made to the system. If a new configuration is saved, it will overwrite the old configuration and may require you to change previous equipment settings.

If pool equipment is added or removed from your system you may edit the existing Configuration. Quick Edit allows you to go directly to the equipment that you'd like to add/remove/configure. Refer to the Quick Edit Guide section in the Installation manual for more information.

System Info

System Info will show the Hayward Unique Address (HUA) and version for all smart components (components that communicate with the VS Omni). This may be needed by Hayward Technical Service when troubleshooting or diagnosing system issues.

This screen will also display the MSP ID, which is used as a password for entering the Configuration Wizard as well as entering Simple Mode.

Backup Config

You can back up your configuration settings, schedules, setpoints, etc. to the VS Omni's internal memory or to a USB thumb drive.

Restore Config

You can overwrite the existing configuration with a backup that is stored internally or on a USB thumb drive. After selecting Restore Config, the following options will appear:

Restore Last - this is the last backup that was saved to internal memory.

Restore Prev - this is the second to last backup that was saved to internal memory.

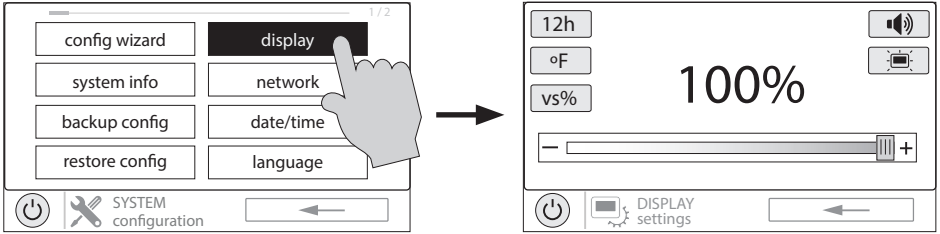
[DATE] - this is the oldest backup that was saved to internal memory. The date will be shown on the selection.

Restore from USB - you can browse the USB drive and find available backups. Backup files will begin with "MSPCONFIGxyyz" where xx=month, yy=day, and zz=year (the date the file was created). The VS Omni will automatically create a backup file when a new configuration is saved. These files end with ".xml". Backup files that are created manually end with ".bak". Both types can be restored.

To restore a backup, make your selection from above and then touch Save.

Display

The Display Settings screen offers options to customize the way the VS Omni displays information.



12/24 hour format - Toggles between 12 hour and 24 hour time display.

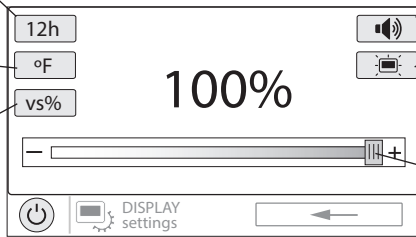
°F/°C - Toggles between °F and °C.

VSP Speed Display - Display VSP pump speed in % or RPM.

Audio - Toggles between audio on and off.

Display Settings - Set display idle duration and default on settings.

Display Brightness - Set display brightness.



Network

You can view the VS Omni ip address at this screen. This is the address that the router will use to connect the VS Omni to the home network. You can also turn the connection to the router on and off using the On/Off toggle.

Date/Time

Set the date and time on this screen.

Language

Select a language. If a desired language is not shown, it may be available from Hayward through their website at www.hayward.com/firmware. Refer to page 29 for information on installing new languages.

Data Log (requires a thumb drive, page 24)

Use this feature if instructed by Hayward Technical Service. The data log shows a log of daily operations and can help Hayward Technical Service diagnose or troubleshoot problems. The data log options are:

Clear Log File - this will delete all data in the log file.

Show Log File - this will display the log file.



Restore Defaults - this will return the data log settings to the factory default.

Set Level - you can change the amount of detail that is shown in the log file with this button.

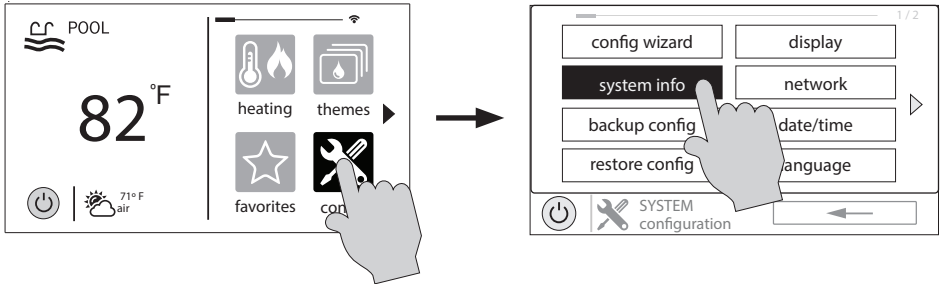
You can also enable or disable data logging using the On/Off toggle.

Upgrade

Additional functions, features, and languages may be available for your VS Omni.

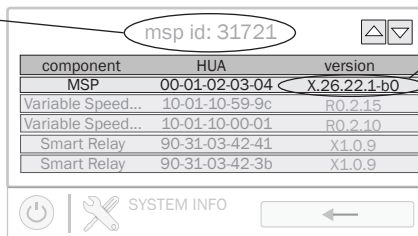
Determine if Firmware Upgrade is Available

The VS Omni's firmware is the basic operating system that runs the unit. The VS Omni was shipped with the version of firmware that was available at the time of release. There may be a newer version available and if so, we encourage you to upgrade. Also, if you have experienced problems, Hayward Technical Service may advise you to upgrade your VS Omni firmware. If this is the case, follow the instructions on the following page.



1. Determine your current MSP firmware version.

MSP ID Number

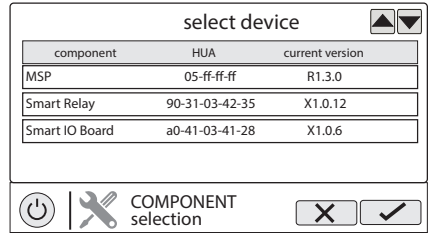
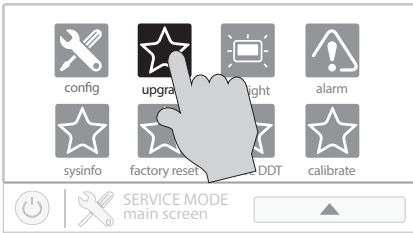


Current Firmware Version

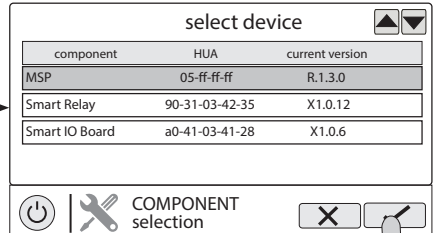
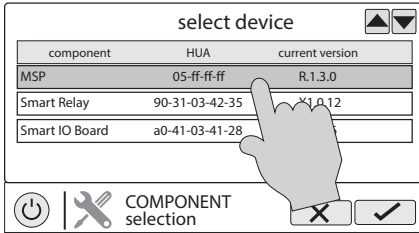
2. Using an ordinary web browser, go to www.hayward.com/firmware and compare the latest available version on the web to the current firmware version. If the firmware version on the web is greater (number is larger) than your current version, upgrade your VS Omni. If not, periodically check the website and upgrade as newer firmware is released.

Upgrading Firmware (must be in Service Mode, page 3)

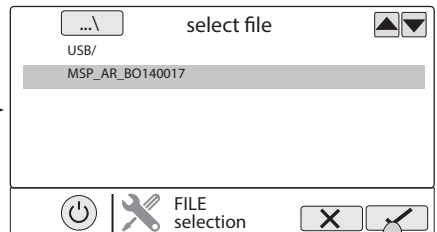
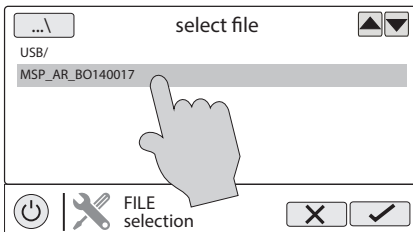
1. Insert your USB thumb drive into your computer.
2. Go to www.hayward.com/firmware.
3. Click on the link to download the latest firmware and save to the USB thumb drive.
4. Remove the USB thumb drive from the computer.
5. Locate the port on the underside of the VS Omni Control Pad and insert the thumb drive.
6. Apply power to the VS Omni (if not already powered) and allow the VS Omni to fully start.
7. Enter Service Mode (page 3)
8. Touch the Upgrade button



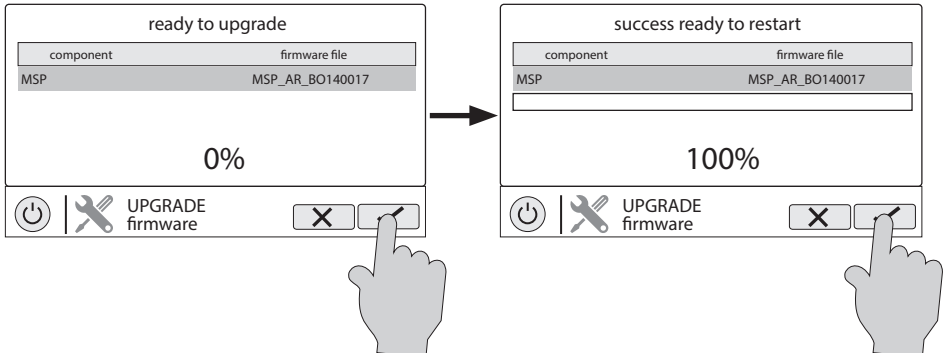
9. Select "MSP" and touch the Save button.



10. The VS Omni will now look at your USB thumb drive. Select the firmware file that was saved from the website and then touch the Save button.



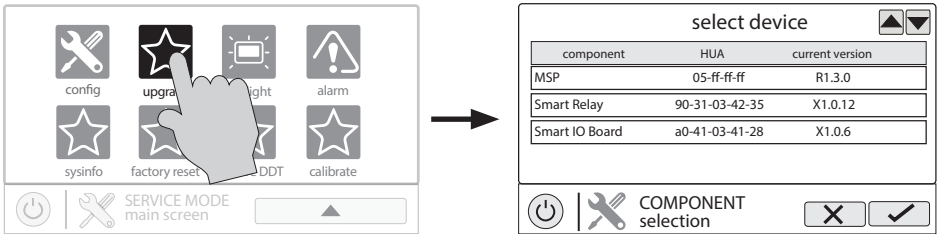
11. Touch Save to begin the upgrade. After the upgrade is finished, touch Save to restart.



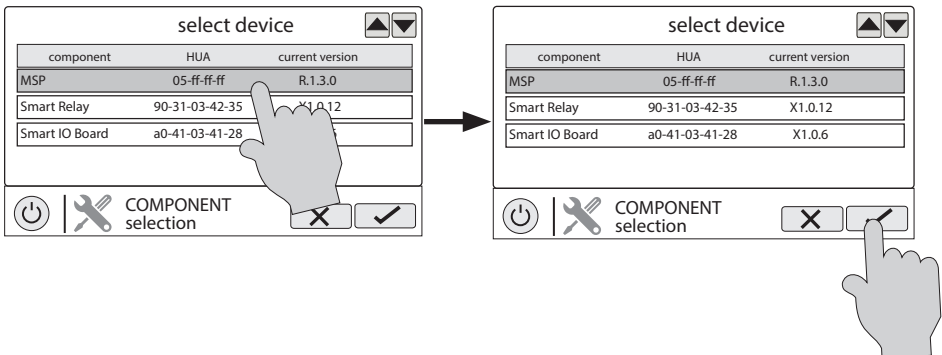
12. After the VS Omni has restarted, exit Service Mode and resume operation.

Installing a New Language (must be in Service Mode, page 3)

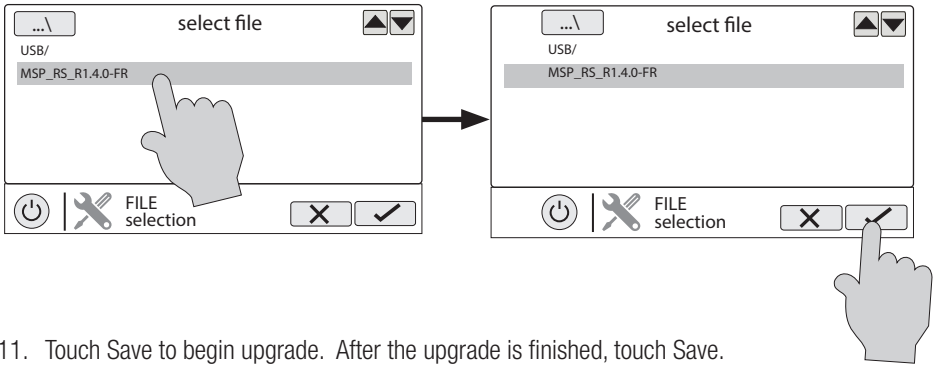
1. Insert your USB thumb drive into your computer.
2. Go to www.hayward.com/firmware.
3. Click on the link to download the desired language and save to the USB thumb drive.
4. Remove the USB thumb drive from the computer
5. Locate the port on the underside of the VS Omni Wiring Hub and insert the thumb drive.
6. Apply power to the VS Omni (if not already powered) and allow the VS Omni to fully start.
7. Enter Service Mode (page 3).
8. Touch the Upgrade button.



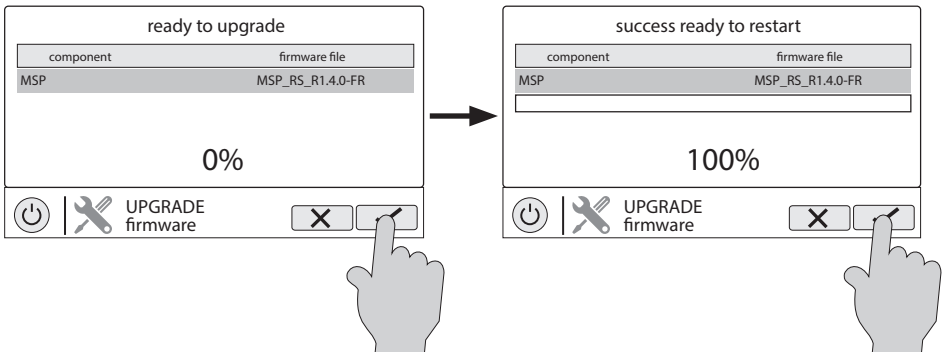
9. Select "MSP" and touch the Save button.



10. The VS Omni will now look at your USB thumb drive. Select the language file that was saved from the website and then touch the Save button.



11. Touch Save to begin upgrade. After the upgrade is finished, touch Save.



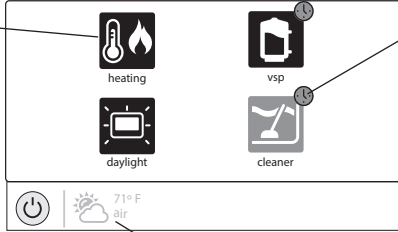
12. After VS Omni has restarted, exit Service Mode and resume operation.

Simple Mode

Up to this point, you've been shown how to view the Home Screen and access all of the pool's functions by using the features screens (left side of Home Screen) and favorites (right side of Home Screen). This method of access is called "Standard Mode" and offers the most information and control. An alternative to Standard Mode is "Simple Mode". Simple Mode eliminates the Home Screen and allows you to view and control only the Favorites that you specify. Simple Mode is customizable and may be preferred to Standard Mode depending on your needs. Simple Mode can provide a convenient way to access the most common functions for owners as well as a handy solution to limit access to other users. Up to 24 Favorites can be displayed in Simple Mode. Depending on the pool equipment that has been configured, some default Favorites may appear in Simple Mode. These default Favorites cannot be removed from Simple Mode. For information on how to add and delete Simple Mode Favorites, refer to page 21.

Simple Mode Screen

Status - Items that are highlighted are active or “On”. In this example, the VSP pump and heater are both On. Touching buttons in Simple Mode will turn the items On or Off.

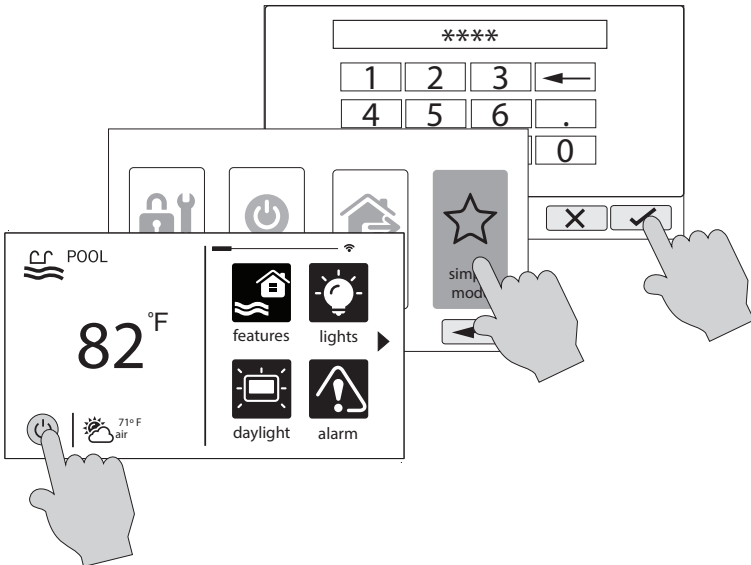


Schedule Indicator - Favorites that have been configured to operate on a schedule will display this indicator.

Home Screen Information - The same information that is displayed on the Home Screen is also displayed on the Simple Mode screen.

Enter Simple Mode

To enter Simple Mode, go to the Home Screen and follow the procedure below. Entering and exiting Simple Mode will require your VS Omni’s MSP ID number. This number is used as a password. To find your unit’s MSP ID, refer to page 27.

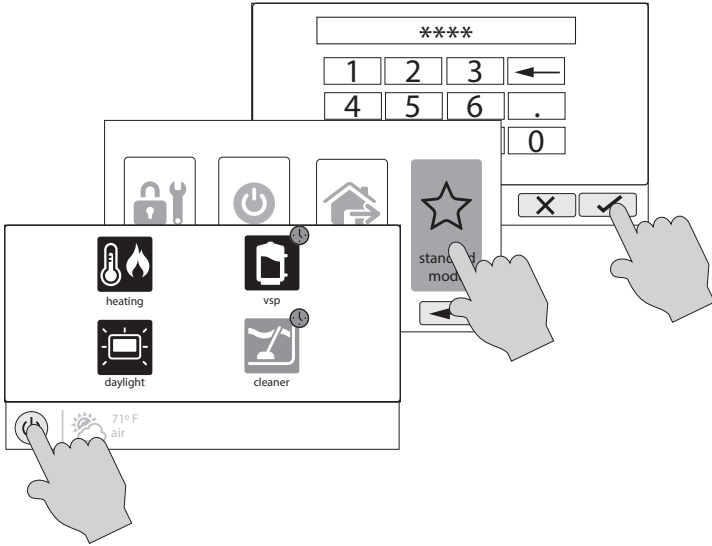




HAYWARD®

Exit Simple Mode

To exit Simple Mode, follow the procedure below.



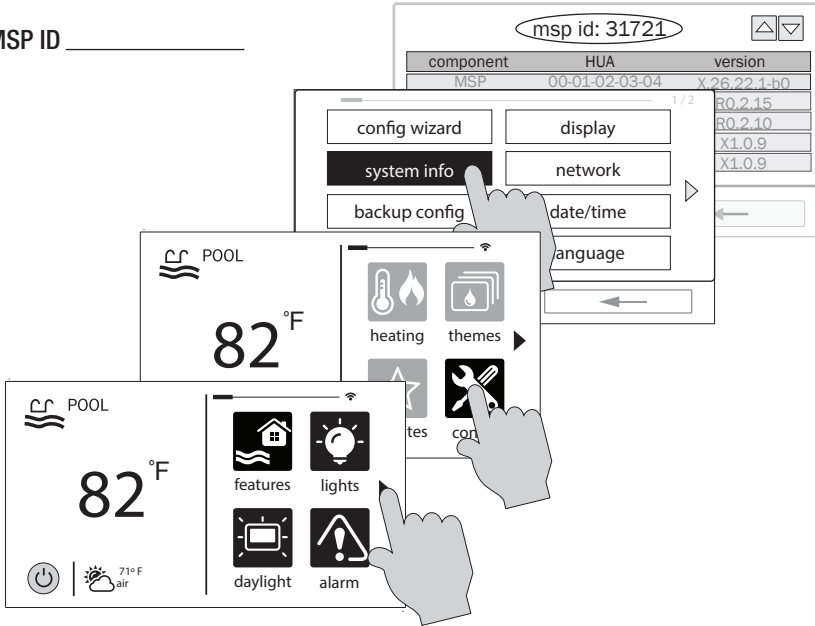


Web Enabled Control

The VS Omni should have already been configured for use with the home's router to allow for remote control through the web. This procedure is covered in the Configuration Wizard information found in the Installation manual. After configuration, an account must be created to allow access to the VS Omni from web enabled devices. If this has not already been done by the installer, follow the procedure below.

1. Using an ordinary web browser, go to www.haywardomnilogic.com. If you don't already have an account, select "Register New User" and set up a new account.
2. Log in to you account.
3. Register your VS Omni. Registering will require you to answer a series of questions about your VS Omni. When asked for your Time Zone, be sure to enter the same time zone as the physical location of the installed VS Omni, otherwise schedules will be inaccurate. You'll also be asked for an MSP System ID. This number can be found directly from the VS Omni. To find your unit's MSP ID, follow the procedure below.

MSP ID _____



After the MSP is accepted, the VS Omni will be linked to your account. You'll be able to access the VS Omni at any time from your browser by logging into your account at haywardomnilogic.com. For mobile devices, download the "OmniLogic" app from your device's app store. Login to your account through the app and you should see the VS Omni.



HAYWARD®

Hayward® TriStar VS 950 Omni Limited Warranty

To Buyer, as original purchaser of this equipment, Hayward Pool Products, Inc. warrants this product to be free from defects in materials and workmanship for a period of FOUR (4) years from the date of purchase.

Parts which fail or become defective during the warranty period, except as a result of freezing, negligence, improper installation, use, or care, shall be repaired or replaced, at our option without charge, within 90 days of the receipt of defective product, barring unforeseen delays.

To obtain warranty replacements or repair, defective components or parts should be returned, transportation paid, to the place of purchase, or to the nearest authorized Hayward service center. For further Hayward dealer or service center information, contact Hayward customer service department or visit us at www.hayward.com. No returns may be made directly to the factory without the express written authorization of Hayward Pool Products.

Proof of purchase is required for warranty service. In the event proof of purchase is not available, the manufacturing date of the product will be the sole determination of the purchase date.

Hayward shall not be responsible for cartage, removal, repair or installation labor or any other such costs incurred in obtaining warranty replacements or repair.

The Hayward Pool products warranty does not apply to components manufactured by others. For such products, the warranty established by the respective manufacturer will apply.

The express limited warranty above constitutes the entire warranty of Hayward Pool Products with respect to its' pool products and is in lieu of all other warranties expressed or implied, including warranties of merchantability or fitness for a particular purpose. In no event shall Hayward Pool products be responsible for any consequential, special or incidental damages of any nature.

Some states do not allow a limitation on how long an implied warranty lasts, or the exclusion of incidental or consequential damages, so the above limitation may not apply to you. This warranty gives you specific legal rights, and you may also have other rights, which vary from state to state.

Hayward® TriStar VS 900 Omni, Super Pump VS 700 Omni, MaxFlo VS 500 Omni Limited Warranty

To Buyer, as original purchaser of this equipment, Hayward Pool Products, Inc. warrants this product to be free from defects in materials and workmanship for a period of THREE (3) years from the date of purchase.

Parts which fail or become defective during the warranty period, except as a result of freezing, negligence, improper installation, use, or care, shall be repaired or replaced, at our option without charge, within 90 days of the receipt of defective product, barring unforeseen delays.

To obtain warranty replacements or repair, defective components or parts should be returned, transportation paid, to the place of purchase, or to the nearest authorized Hayward service center. For further Hayward dealer or service center information, contact Hayward customer service department or visit us at www.hayward.com. No returns may be made directly to the factory without the express written authorization of Hayward Pool Products.

Proof of purchase is required for warranty service. In the event proof of purchase is not available, the manufacturing date of the product will be the sole determination of the purchase date.

Hayward shall not be responsible for cartage, removal, repair or installation labor or any other such costs incurred in obtaining warranty replacements or repair.

The Hayward Pool products warranty does not apply to components manufactured by others. For such products, the warranty established by the respective manufacturer will apply.

The express limited warranty above constitutes the entire warranty of Hayward Pool Products with respect to its' pool products and is in lieu of all other warranties expressed or implied, including warranties of merchantability or fitness for a particular purpose. In no event shall Hayward Pool products be responsible for any consequential, special or incidental damages of any nature.

Some states do not allow a limitation on how long an implied warranty lasts, or the exclusion of incidental or consequential damages, so the above limitation may not apply to you. This warranty gives you specific legal rights, and you may also have other rights, which vary from state to state.

For further information or consumer
technical support, visit our website at
www.hayward.com
US: 908-355-7995

Pour de plus amples informations ou un soutien
technique au consommateur, visitez notre site Web à
www.hayward-pool.ca
Canada: 888-238-POOL



Hayward is a registered trademark and Pro Logic
is a trademark of Hayward Industries, Inc. © 2018 Hayward Industries, Inc.

All other trademarks not owned by Hayward are the property of their respective owners.
Hayward is not in any way affiliated with or endorsed by those third parties.

USE ONLY HAYWARD GENUINE REPLACEMENT PARTS